



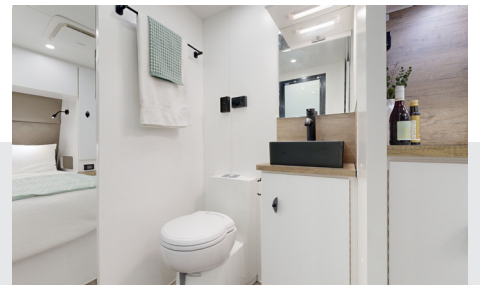
John Harris 0406 189 731  
DL 30273 MRB 11149

67 Dixon Road Rockingham  
WA 6168



eternityvanswa@yahoo.com

# 20.6' Couples Rear Club



## LOVE NEST GETAWAYS

Begin a journey of sophistication and innovation with Aus Wide Caravans' 20.6 Couples Rear Club. This model boasts a luxurious rear lounge that combines luxury with practical storage solutions. Enjoy the spacious open-plan layout that promotes freedom of movement and relaxation, highlighted by plush seating designed for ultimate comfort.

The smart design of this van efficiently utilizes every inch of space, ensuring everything has its place—a reflection of the caravan's design excellence. Crafted with precision, the 20.6 Couples Rear Club stands as a testament to our commitment to superior craftsmanship.

Say goodbye to doubt and welcome a new era of adventure with the 20.6 Couples Rear Club from Aus Wide Caravans, a symbol of reliability, luxury, and masterful engineering for enthusiastic adventurers. Get ready to fasten your seatbelts and set off with your partner on the journeys you've always dreamed of. With Aus Wide Caravans, adventure transcends mere activity—it becomes a profound, shared journey that enhances the splendour of each moment spent together.



# 20.6' Couples Rear Club Specifications

## Chassis

6" heavy duty chassis
Off Road Suspension
DO35 off road coupling ( with pin )
16" mag wheels with off road tyres Mud Terrain Tyres
Straight Flat Bumper Bar
Spare wheel will be under the chassis at the front
Stone Guard
Extended Drawer Bar

## Kitchen & Lounge

Rear Club Lounge
Dometic Compressor fridge 188 Litre
23 Litre Microwave with 1 /240 plug
12v LED touch screen Rangehood
Large Sink Black
Airconditioning and heating reverse cycle
NCE sound system
BM Pro Control Screen Trek
Gas and electric Hot Water Service
Flick Mixer
Swift oven with 1 /240 Plug
Adjustable/Drop down table

## External

2x External Speakers
Roll out awning
2x 210 watt solar panels
Reverse Camera
2x normal water tanks 110 Ltr
1x grey water 110 Ltr
Front Tunnel Boot
1x Drop down picnic tables
External Shower
2x 110 Lithium Batteries
12" Electric Brakes
Grab handle
Double glazed windows with two way flyscreen / privacy blinds, Slim Line Square or Round Tinted windows
Gas Bayonet Fitting
External TV 12V connections
LED annex lights x 3 on sides, 1 Front 1 Back
Quick release stabiliser legs
Big Tool box on front Both Sides Slide Out
Single Piece Fiber Glass Roof Sheet

## Bedroom

LED down lights throughout van
LED hatches
1x 12v Fan in main bedroom
Queen bed, innerspring mattress with under bed
His/Hers wardrobes
LED reading lights 2 in L-shape Lounge
12v points in pigeon holes in Robes 1 in each & 240 Connection
Antenna Connection Winegard digital Aerial
Adjustable Swingarm with 12V & 240v

## Bathroom

Massive shower
Thetford toilet
Basin Black Round or Square
Top Loading washing machine 3.5
Mirror
Ample storage throughout
Double overhead

## Electrical

Anderson Plug
Brake Safe
Separate Fresh Water tank Gauge indicators
Water pump



3 Gas & 1 Electric Plus Grill



Queen Bed with Storage



Full Ensuite

