



Family Base Camp 21 6", Gratitude 20' Rear Door , Legacy 20' Rear Club Lounge

Silvershine Australian Chassis, Extended A Frame 400MM, Chassis Includes 3' Raiser, Shine XT 3.7T Full Off-Road Suspension, R16" 265/75R and All Terrain Tyres, 1 x Spare Wheel, D035 Full Articulated Tow Hitch, Front and Rear Recovery Points.

External Features

3mm Aluminum Composite Hail Resistant Cladding, One Piece Hail Resistant Fiberglass Roof, Extra Large Toolbox On A Frame with BBQ Slide, Generator Slide, Jerry Can Holders on the rear bumper bar, Work/BBQ Spotlight on front switch from outside, External TV Point, Drop Down Metal Picnic Table, Double Glazed Windows, Double Glazed Roof Hatch's with LED Light Surrounds, Central Cradle Support, Pull Out Aluminum Step with LED light, Rear Work Light, 4 Anti Bug Lights, 1 Anti Bug Light on road side, Inner Step Light, Grab Handles with led lights, Extra set of Slim Tail Lights on the top at rear, Reverse Camera, 2 x Fusion Black Square Speakers outside, 2 x Water Fillers, External Shower.

Interior Build

Handmade light weight stick build furniture, European Poplar Plywood Laminate Doors, European Poplar Plywood Laminate Benchtops, Recessed Covered Cooktop, Double Gas Struts to all overhead cupboards, Premium NX Splash backs, Metal Sided Soft Close Drawers, Pull-Out Pantry.

Appliances

True Reverse Cycle Inverter Air Conditioner, 188L 3 - Way 2 Door Fridge Freezer, Swift 3 Gas Burner 1 Electric Cooktop And full oven, Front Load or Top Load Washing Machine, Premium Fusion Stereo System, and Internal Speakers, 24" Smart TV, Microwave Recessed Glass Range-Hood.

Internal Features

Queen Pillow-Top Mattress, Magazine Racks, Door Head Bump, Cafe or L Shape Seating, Large Skylight with LED in bedroom, Dimmable LED skylight in bunk area, Hydraulic Table (converted to a bed), Flyscreens and Blinds to all double glazed windows, Multiple Metal Sided Drawers, Black Granite Sink with Matching Mixer, All black tap-wear and accessories.

Electrical

2 X 210W (420W) Solar Panels, 35AMP BM Pro Odyssey charger with tablet controller, BM Pro Trail safe, Sway Command - Sway Control, 40amp circuit breaker at the battery, 2 X LED bar front and back, 2 x Wireless chargers in bedside cutouts, 2 x 200AH Lithium Batteries, 3000W PROJECTA Inverter running all the appliances, Water Tank Level Management Indicator, 2 x Fresh Water, 1 x Grey Water, LED Lighting throughout, Internal and External, 5 x External Color Change Anti Bug Lights, 12V reading lights with USB Charging at Dinette and both sides of bed, Wine Guard Wind Up Antenna, Internal 12V and TV Point.

Plumbing

2 x 95L Water Tanks, 1 x 95L Grey Water Tank with Non Return Capability, Protected Tap On A Frame, 28L Stainless Steel Gas and Electric Hot Water System, Ceramic Swivel Toilet with 19L Capacity Cartridge, Large One Piece Fiberglass Shower, 2 x 9Kg Gas Bottles, 2 x Gas Bayonet adjacent to front Tunnel Boot, Black Tap features, Filtered water in kitchen for drinking and Water pump.

Standard Options fitted to Base Camp, Gratitude and Legacy.

Big Toolbox with 2 slides	BM PRO Trail – Safe
BM Pro Odyssey Charger with Tablet	2 X 210W Solar
3000W Projector Inverter	Premium Fusion Stereo Plus Speakers
2 X 200AH Lithium Batteries	5 Twin Colour Awning Lights (Anti Bug Lights)
2 X Big Led Bar Lights	2 X Narva Rear Indicators plus Stop Lights
Front Mount switch Clipsal Waterproof	2 X 12V Sockets
2 X Wireless Chargers in Bed Cutouts	Big Number Plate Lights
RCD Box	40AMP Breaker near battery
5 Fresca 12V Fans – Black	Eternal Shower (Hot & Cold Water)
Coast to Coast Sway Command Sway Control	4 X 2 In one Switches for Anti Bug Lights

John Harris Mobile : 0406 189 731

Email : eternityvanswa@yahoo.com

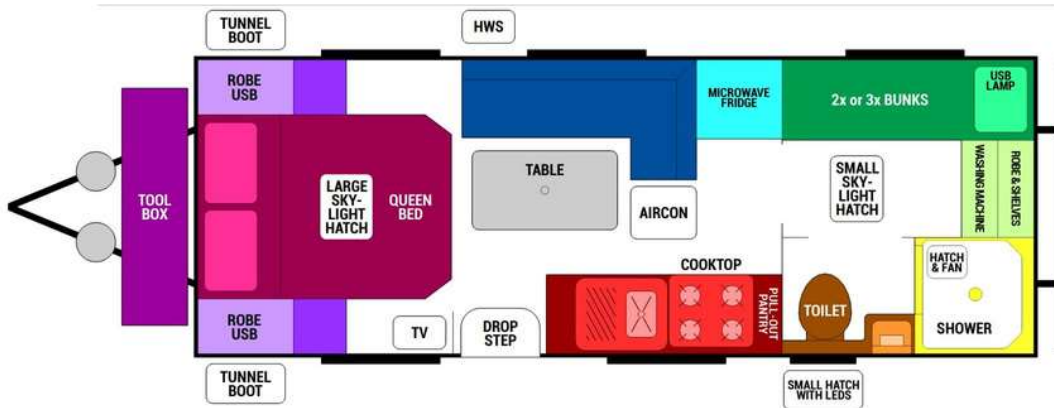
D/L 28349

MRB 9435



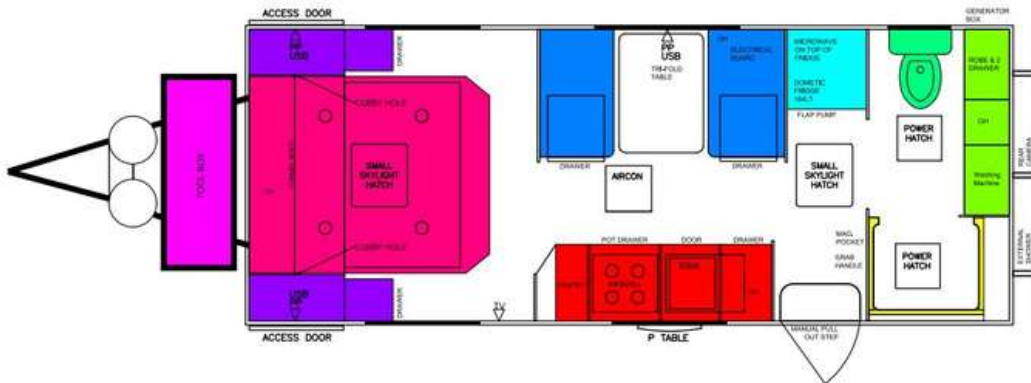
Family Base Camp 21 6", Gratitude 20' Rear Door , Legacy 20' Rear Club Lounge

Family Base Camp 21 6"



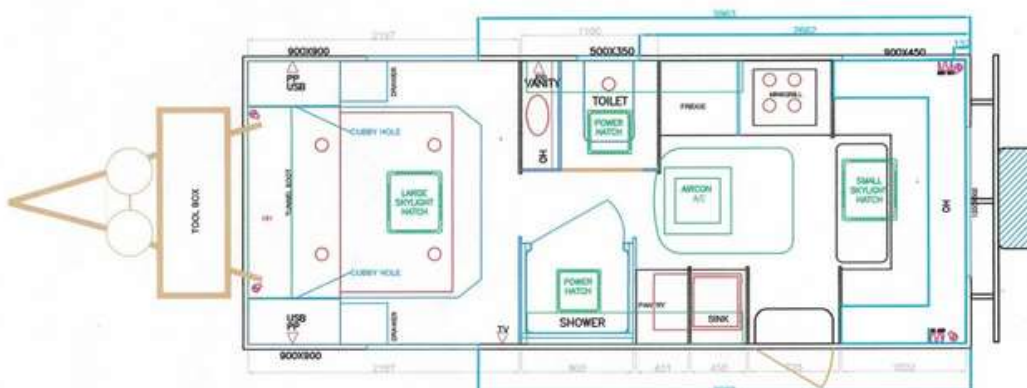
Tare - 2900KG
 ATM - 3500KG
 Ball - 160KG

Gratitude 20' Rear Door



Tare -2626KG
 ATM - 3500KG
 Ball - 180KG

Legacy 20' Rear Door Club Lounge



Tare - 2742KG
 ATM - 3500KG
 Ball - 185KG



Journeyman 17 6" & Hardcore 18 6 " Full Off Road

100% Australian designed and built Chassis

6 Inch Drawbar, 300MM Drawbar Extension, 4'Inch Main Chassis, 3'Inch Riser, Independent Suspension, 12 Inch Brakes, D035, 3 Arm Rear Bar, X2 Batteries on Chassis, Stone Deflector, 265/75/R16 Wheels & Tyres, Jockey Wheel, 4 X Drop Down Legs, Pull Out Step, Protection for Water Tanks, Mesh in A Frame.

Electrical

2 X 210 Wat Solar Panels, 2 X 170AH Litium Batteries, 35AMP Lithium Charger, AM, FM Radio with Inbuilt CD & DVD Player, 2 X Internal Speakers, 2 X External Speakers, Break Away System, 24 Inch Smart TV, LED Front Spotlight, LED Lighting Inside & Out, LED Tail Lights, LED External Grab Handle, Reading Lights with USB Inbuilt throughout, Wireless Chargers to Bedside, Double Powerpoints, Digital Water Tanks Display, Grey Anderson Plug Charges while driving, 12 Pin Flat Trailer Plug, Alicomp ides, front & rear, 1 piece Fibreglass Roof, Checker Plate to sides & front, 14 FT Roll out awning, , Roof Hatches with inbuilt LED, External Hatches with adjustable locks, Picnic Table, Ball Bearing drawer slides with soft close feature, Full Height Splash back, External Gas Bayonet, External 240V Outlet, External 12V Outlet, Wine Guard TV Antenna, 2 X 9 KG Gas Bottles, Reverse Camera.

ESC Option

\$1650.00

John Harris Mobile : 0406 189 731
Email : eternityvanswa@yahoo.com
D/L 28349
MRB 9435

Water Storage

2 X 95L Water Tanks, 1X 95L Grey Water Tank, Tap on A frame, Mains Pressure Inlet with Limiting Valve, Fully Protected Plumbing, 12 V Pump.

Appliances

188L Dometic 3 Way Fridge Freezer, Instant Electric Hot water Unit, 3.2KW Roof Mount Air Conditioner, 12V Range Hood, Swift Gas & Electric Cooktop, Swift Full Oven, 20L Microwave, 3.2KG Top Load Washing Machine.

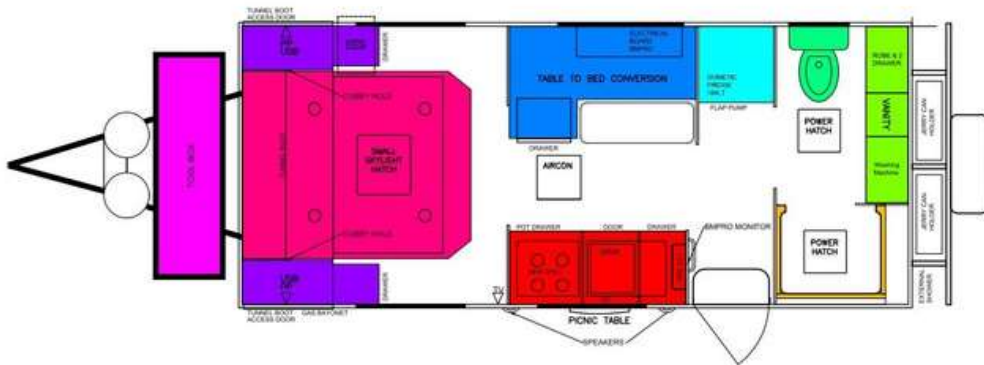
Internal features

Double Glazed Windows, Security Mesh Door, Piano Hinges, Square Edge Bench Tops, Pillowtop Innerspring Mattress, Ceramic Toiletbowl, Ceramic Hand Basin Sink, Stainless Steel Sink, Flick Mixer Taps, Ball Bearing drawer slides with soft close feature, Full Height Splash back, L Shape Lounge.



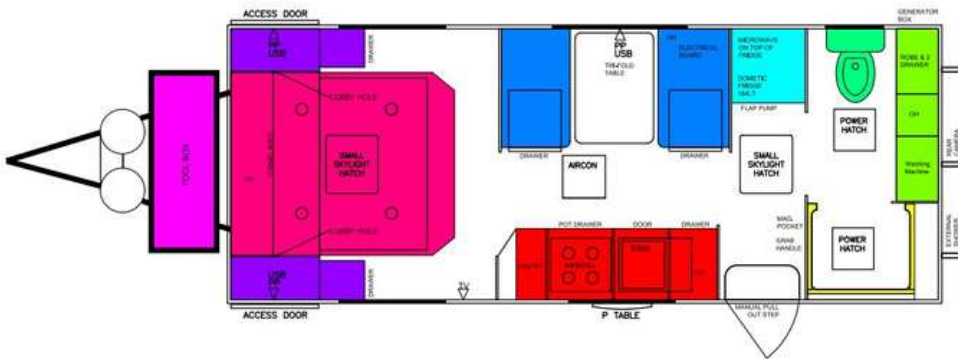
Journeyman 17 6" & Hardcore 18 6" Full Off Road

Journeyman 17 6"



17 6"
Tare - 2220KG
ATM - 2700KG
BALL - 180KG

Hardcore 18 6"



18 6"
Tare - 2350KG
ATM - 3000KG
BALL - 180KG

Options available in 17 6" Journeyman. **STANDARD** in the Hardcore

- | | |
|--|---|
| Big Toolbox with 2 slides | BM PRO Trail – Safe |
| BM Pro Odyssey Charger with Tablet | 2 X 210W Solar |
| 3000W Projector Inverter | Premium Fusion Stereo Plus Speakers |
| 2 X 200AH Lithium Batteries | 5 Twin Colour Awning Lights (Anti Bug Lights) |
| 2 X Big Led Bar Lights | 2 X Narva Rear Indicators plus Stop Lights |
| Front Mount switch Clipsal Waterproof | 2 X 12V Sockets |
| 2 X Wireless Chargers in Bed Cutouts | Big Number Plate Lights |
| RCD Box | 40AMP Breaker near battery |
| 5 Fresca 12V Fans – Black | Eternal Shower (Hot & Cold Water) |
| Coast to Coast Sway Command Sway Control | 4 X 2 In one Switches for Anti Bug Lights |

John Harris Mobile : 0406 189 731
Email : eternityvanswa@yahoo.com
D/L 28349
MRB 9435